



METHOD-1 SHIELD™

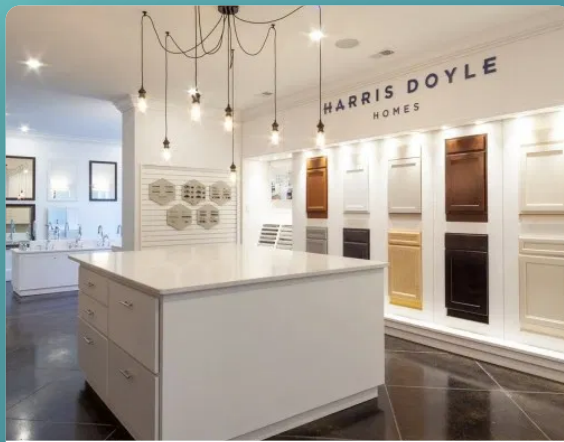
ANTIMICROBIAL PROTECTION

PROTECTING THOSE WE COUNT ON

Using Method-1 Shield, an antimicrobial laminate, we can now install protective graphics to your surfaces that will help protect the people who touch them.



ELEVATOR BUTTONS



COUNTERTOPS



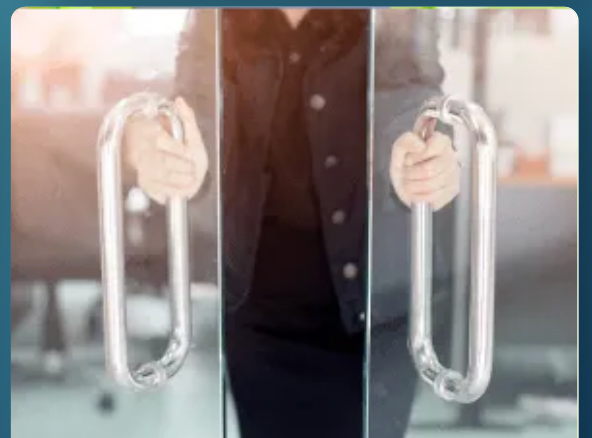
RECEPTION DESKS



KIOSKS



ATMS



DOOR HANDLES

method-1™



BRANDED INTERIORS

800-747-3976
Method-1.com
info@method-1.com
method-1.com/shield/

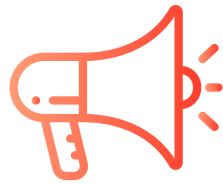
WHY USE METHOD-1 SHIELD?

Method-1 Shield graphics offer branding opportunities with effective and long-lasting protection against many forms of bacteria.

It's peace of mind without a second thought.



Protect your clients and employees by protecting the areas they touch



Get added exposure for your company in places you had not previously thought about.



Show your clients and employees you are doing everything possible to keep them healthy

PROMOTING YOUR PROTECTED SURFACES



FREESTANDING SIGNAGE

Make sure your customers and clients realize that your surfaces are protecting them! We offer a customized 3.75" x 4.75" sign in a sturdy aluminum frame. This is the perfect way to offer reassurance without saying a word.



SURFACE DECAL

Look for this decal to identify where Method-1 Shield is applied. This easily recognizable label will provide visitors peace of mind knowing that your surfaces are safe to touch!



WINDOW/DOOR DECAL

Easily recognizable at the entrances and exits of your business, this decal informs everyone of your advanced level of protection. This decal is available in 4"x4", 5"x5" and 6"x6" sizes.

PROTECT YOUR BUSINESS TODAY

METHOD-1 SHIELD GRAPHICS

Method-1 Shield is not just a protectant, it is also a graphic! So your protected surface can be any image, color or design imaginable. We can also add your logo to the signage and decals promoting the protection for additional branding for your company.



PROFESSIONAL INSTALLATION

Method-1 recommends and offers professional installation of Method-1 Shield by our trained installation team.



**METHOD-1
SHIELD™**
ANTIMICROBIAL PROTECTION
PROTECTING THOSE WE COUNT ON

WHAT IS METHOD-1 SHIELD?

Method-1 Shield is a technically sophisticated and high-quality film, which helps provide effective and long-lasting protection for your public spaces, buildings, and public transportation. It can be applied under any circumstances and in all locations with high sanitary requirements, such as clean rooms, cold rooms, nurseries, hospitals, food industries. Method-1 Shield is constructed out of PVC, which is then enriched with Silver Ions.

PROOF FROM TESTS: THE ACTIVITY OF METHOD-1 SHIELD

STRAIN	REDUCTION IN BACTERIA AS A %	LOGARITHMIC DECREASE
Salmonella enterica subsp enterica	99,99	> 4,6
Listeria monocytogenes	99,99	> 4,2
Staphylococcus aureus	99,99	> 4,1
Escherichia coli	99,99	> 4,5
MRSA	99,99	> 3,5
P.aeruginosa	99,99	> 5,7

Silver Ions are highly reactive and destroy multiple sites in bacteria cells. During cleaning operations, as well as in the presence of humidity, silver ions are released from the top layer of the film. These ions come into contact with the bacteria, blocking their metabolism and/or interrupting their proliferation mechanism, leading to their destruction.



Inhibits the development of 99.99% of germs tested.



Waterproof, smooth, and easy to wash material.



Effective even at low concentrations, perfectly ecological



Resistant to most chemical agents: alcohol, bleach and germicidal wipes.



Prolonged protection, 24 hours a day, 7 days a week, for several years.



Non-irritable and safe against human skin.

Visit Method-1.com/shield/ for technical information and specifications.

WHERE CAN METHOD-1 SHIELD BE APPLIED?

ANYWHERE WITH A SMOOTH SURFACE!

Method-1 Shield can be applied anywhere and everywhere you'd like to protect, even the hardest to reach areas! Method-1 Shield is waterproof and the adhesion is immediate. After about 24 hours of contact the adhesion becomes permanent. Method-1 Shield is already used in a variety of locations including Trains, Planes, and Subway systems; thus exposing the film to a significant amount of constraints it is built to handle.

THE POTENTIAL USES ARE ENDLESS

There are many high traffic, high touch areas that rarely get cleaned during the course of a regular business day. These areas are often cleaned only a few times per week. Protocols will most likely now call for daily cleaning at a minimum in these publicly accessed areas.

Covering these type areas with Method-1 Shield will increase consumer confidence in the cleanliness of the areas that are touched most often. Seeing the Method-1 Shield label offers reassurance that everything that can be done is being done to keep everyone safe and healthy.



VENDING MACHINES



LOBBY CHAIRS



SANITATION STATIONS